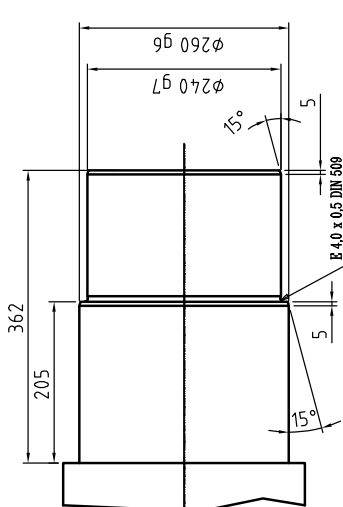
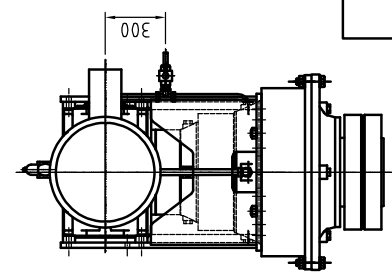
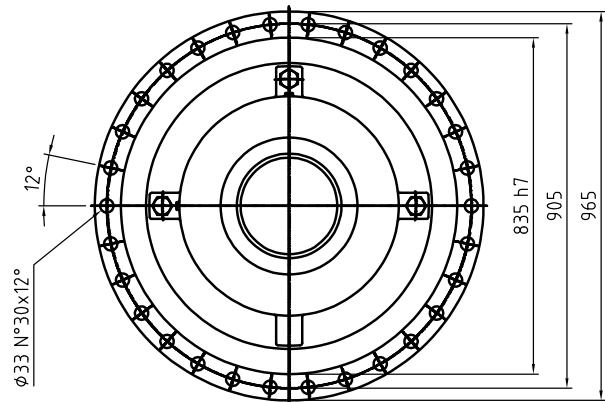
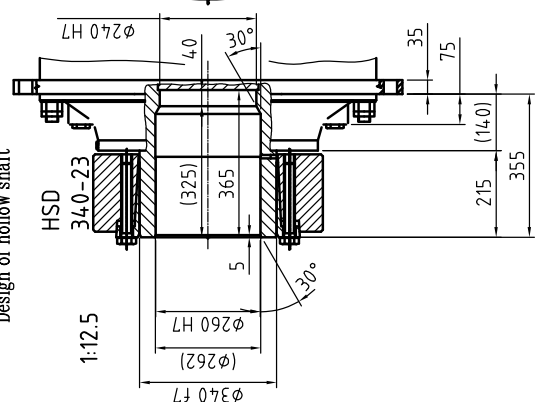


Ausführung der Maschinenwelle
Design of machine shaft



Ausführung der Hohlwelle
Design of hollow shaft



Änderungen vorbehalten ! Subject to alteration !

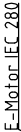
Oberfläche		Maßstab	1:25	Position	Menge
Datum	Name				
Bearb.	08.07.2004	Jp.Telgelder			
Gepr.					
Norm					
d	05.10.04	Tel			
c	30.09.04	Tel			
b	15.09.04	Tel			
a	25.08.04	Tel			
Nr.	Änderung	Datum	Name	EDV Nr.	

PDL703N-FS+KPLB20+
Anbauteile

14.04.07.04

Format Blatt
A3

Bl.



Oberfläche	Maßstab	Position	Menge
	1:20		

Datum		Name

[illegible][illegible]

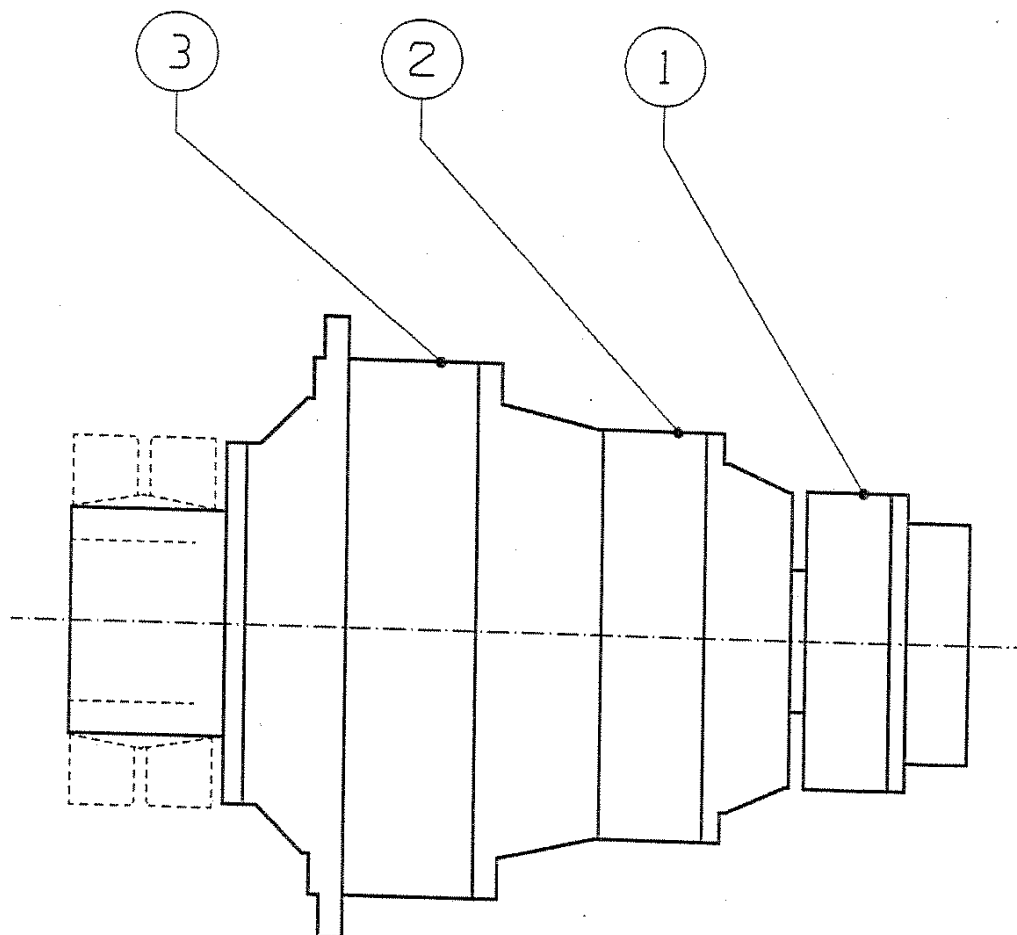
2			
3			
4			
5			
6			
7			
8			
9			
10			
11			
12			
13			
14			
15			
16			
17			
18			
19			
20			
21			
22			
23			
24			
25			
26			
27			
28			
29			
30			
31			
32			
33			
34			
35			
36			
37			
38			
39			
40			
41			
42			
43			
44			
45			
46			
47			
48			
49			
50			
51			
52			
53			
54			
55			
56			
57			
58			
59			
60			
61			
62			
63			
64			
65			
66			
67			
68			
69			
70			
71			
72			
73			
74			
75			
76			
77			
78			
79			
80			
81			
82			
83			
84			
85			
86			
87			
88			
89			
90			
91			
92			
93			
94			
95			
96			
97			
98			
99			
100			

[illegible]

Nr.	Änderung	Datum	Name	UJV Nr.
-----	----------	-------	------	---------

- Seccionado
- Plano dimensional
- Estudio de factibilidad
- Despiece
- Schnittzeichnung
- Dimensionszeichnung
- Realisierbarkeitsstudie
- ET-Explosionsdarstellung
- Plan en coupe
- Plan encombrement
- Etude de faisabilité
- Vue éclatée
- ① Cross sectional drawing
- ② Dimensional drawing
- ③ Feasibility plan
- ④ Exploded view

DISTINTA BASE COMPONENTI Component part list – Liste des pieces Stueckliste – Lista de despieces			1441.09.04	FOGLIO Sheet –Page Seite – Hoja	1/2
DATUM Date 09.09.04					
Bezeichnung : PDL703–FS–F.G.C.+ Donominacion : KPLB20–S50–V11–5.0					
TIPO :					
VERSIONE : VERING VERFRA					
P.	CODICE Code – Codigo	DENOMINAZIONE Description – Beschreibung Denominacion	Q.	NOTE Plan – Bemerk Notas	
001	011B58C613	PDL 703–FS–G.C.36	1	BG	
002		KPLB20–S50–V11–5.0	1	PIV	
003	1205.10.03	Drehmomentenstütze PD 70 FS torque arm	1	BG	
004	1402.07.04	Halter holder	1	BG	
005	1385.06.04	Abdeckung links cover	1	BG	
006		Schrumpfscheibe HSD280–23x280 shrink disc	1	Stüwe	
007		Sechskantschr. M30x120 10.9 DIN 931 screw	30		
008		Schäkel 1.6 Form A DIN 82101 shackle	3		
009		Kupplung Typ E194 coupling	1	Nor–Mex	
010		Zylinderschr. M12x60 8.8 DIN 912 screw	4		
011		Sechskantmutter M12 8 DIN 934 nut	4		
012		Näherungsschalter Typ II5256 proximity switch	1	IFM Electronic	
013		Sechskantschr. M20x120 10.9 DIN 931 screw	4		
014		Scheibe 21 DIN 6916 washer	8		
Mod.	Descrizione modifica		Data	Es/Ct	Sostituisce la :
Comlessivo ①		Dimensionale ②	Studio fattibilità ③		Esploso ④



Mod.

Mod. Data

Modificato da

Controllato da

SE0002084

STUECKLIST

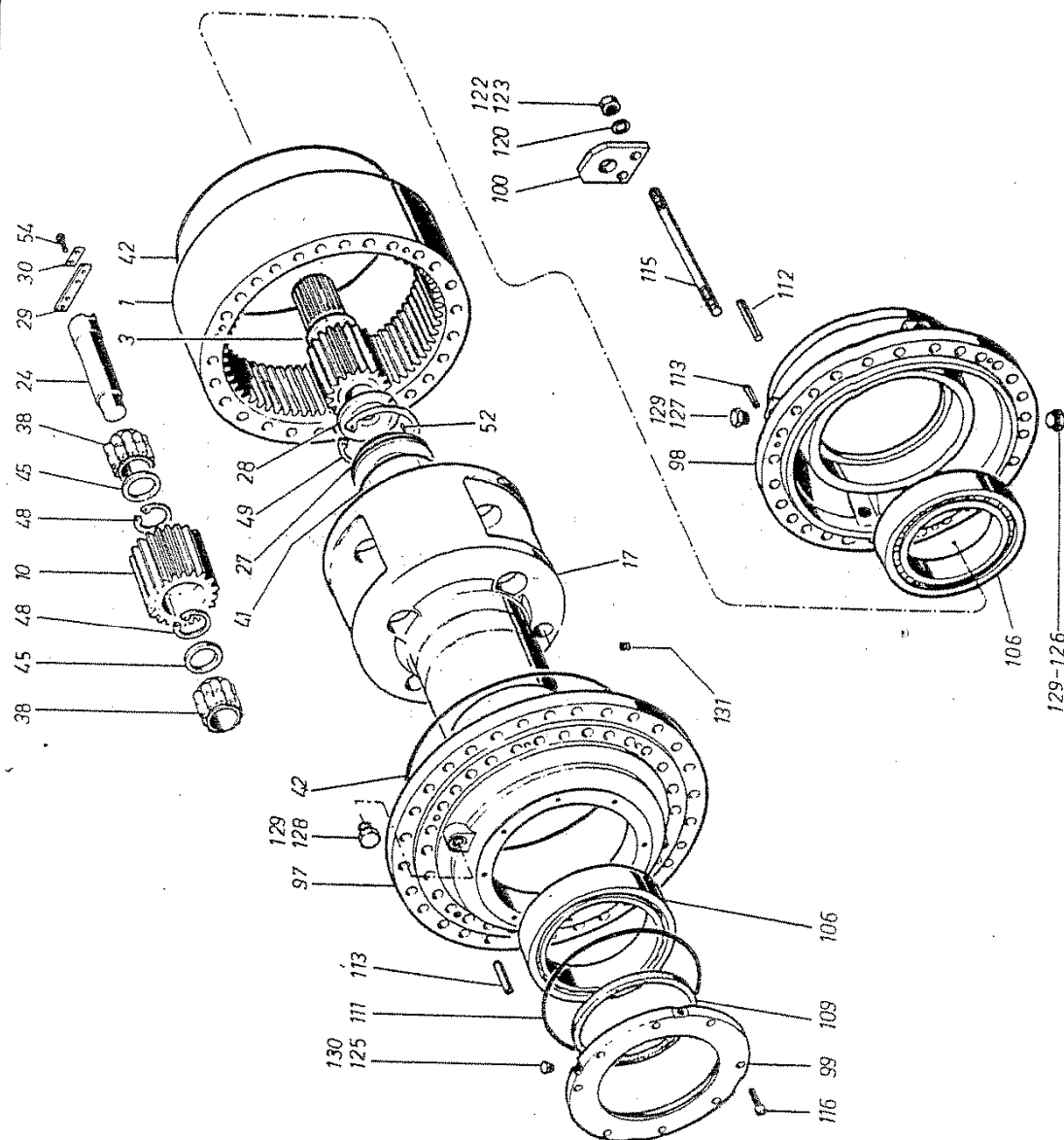
DB0002084/A

11-11-2003

Beschreibung: KOAXIALGETRIEBE
Business Code: PDL703N/FS/./FGC36
Absondern:

P.	Codieren	Bezeichnung	Q.at	Bemerk
001	08/4382	GETRIEBESTUFE PDL101/FE/./FGC36 (Intermedia; Entr.per EM1150)	1	
002	02/4384	GETRIEBESTUFE PDL141S/FE/./FGC44 (intermedia)	1	
003	00/4371	GETRIEBESTUFE PDL701N/FS/3,91/FGC32 Per PDL141	1	

DESCRIZIONE	RIDUZIONE EPICICLOIDALE	ESPLOSO
TIPO	PD 70 FS	0014371
VERSIONE	STANDARD	DISTINTA



- ① Seccionado
② Plano dimensional
③ Estudio de factibilidad
④ Lista de repuestos

- ① Schnittzeichnung
② Dimensionszeichnung
③ Realisierbarkeitsstudie
④ E.T.Mappe

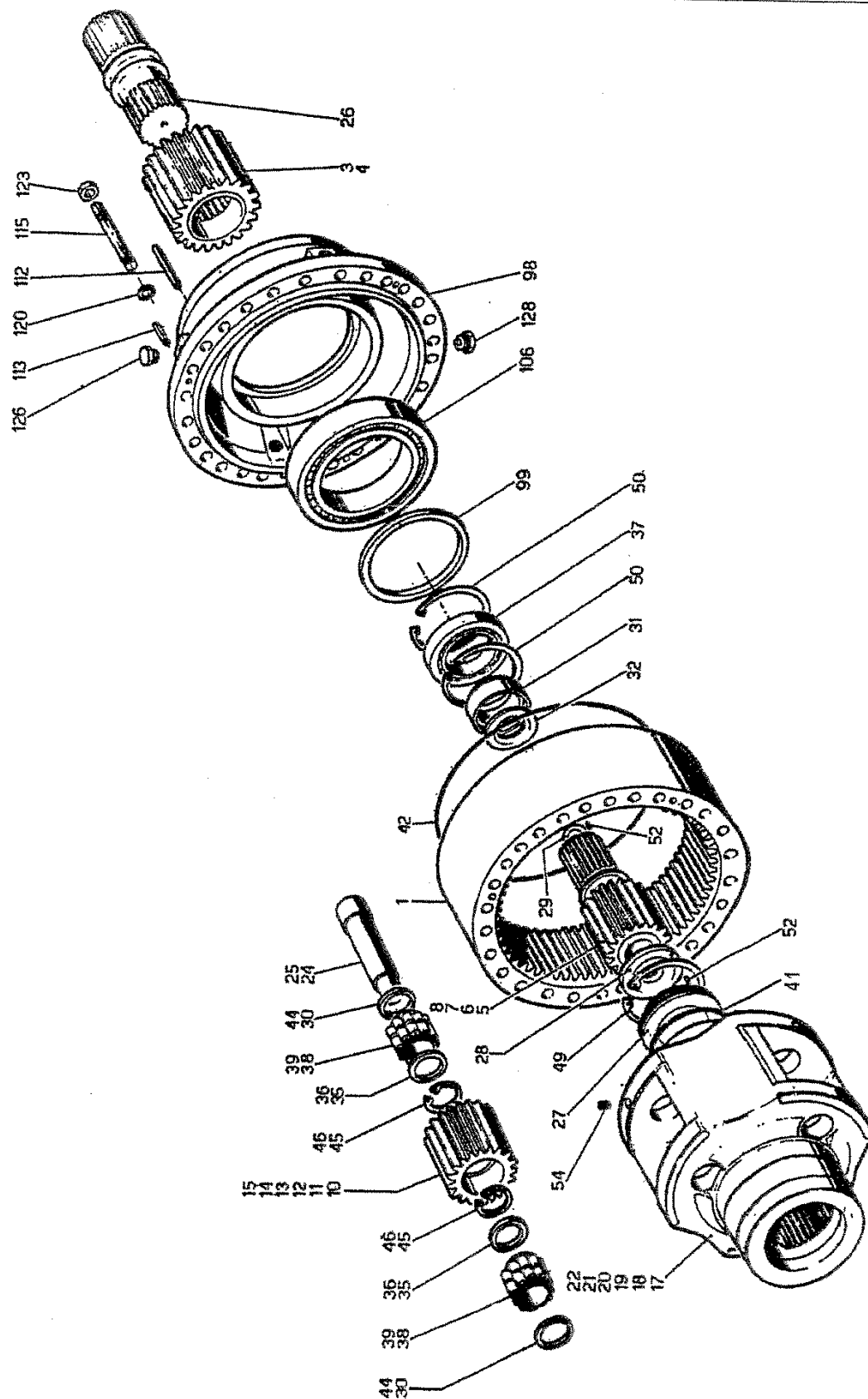
- ① Plan en coupe
② Plan encombrement
③ Etude de faisabilite
④ List de rechanges

- ① Cross sectional drawing
② Dimensional drawing
③ Feasibility plan
④ Parts list

DISTINTA BASE COMPONENTI Component part list - Liste des pieces Stueckliste - Lista de despieces				00/4371		FOGLIO Sheet - Page Seite - Hoja		1/3							
Compilata NERONI			il 27.02.96		Controllata V.MONTANARI			il 27.02.96							
Descrizione: RIDUZIONE EPICICLOIDALE PLANETARY STAGE PLANETENGETRIEBESTUFE REDUCTION PLANETAIRE REDUCCION EPICICLOIDAL															
Tipo: PD 70 FS															
Versione: STANDARD															
P.	CODICE Code -Codigo	DENOMINAZIONE Description Beschreibung - Denominacion	Q.	NOTE Note - Plan Bemerk - Notas											
001	32008712500	CORONA DENTATURA INTERNA RING-GEAR - COURONNE HOHLRAD - CORONA	1												
003	32742922300	GIUNTO CENTRALE i=3,91 SUN PINION - PIGNON CENTRAL ZENTRALRITZEL - PIÑON SOLAR	1												
010	32523122300	SATELLITE i=3,91 PLANET GEAR - SATELLITE PLANETENRAD - SATELITE	5												
017	34565813500	PORTASATELLITE i=3,91 PLANET CARRIER - PORTE-SATELLITE PLANETENTRAEGER - PORTASATELITES	1												
024	31504920100	PERNO PORTASATELLITE PLANET SHAFT - AXE PORTESAT. LAGERBOLZEN - PERNO PORTASAT.	5												
027	37307936100	FONDELLO END PLATE - RONDELLE D'ARBRE ENDSCHEIBE - ARANDELA TOPE	1												
028	36108740100	RALLA THRUST WASHER - BUTEE ENDSCHEIBE - ARANDELA TOPE	1												
029	37403230800	PIASTRINA PLATE - PLAQUETTE PLATTCHEN - PLACA	5												
030	37413946400	PIASTRINA PLATE - PLAQUETTE PLATTCHEN - PLACA	10												
038	423391001X1	CUSCINETTI RSL18 5020*2S (2pz) BEARING - ROULEMENT LAGER - COJINETE	5												
041	41237400000	O-RING 2-272 O-RING - JOINT TORIQUE O-RING - JUNTA TORICA	1												
Mod.		Descrizione modifica								Data	Es/Ct	Sostituisce la			
1		38(42339100100-N.10) PM106								16.12.99	AN/LB	P.N.			
① Complessivo		② Dimensionale								③ Studio fattibilità		④ Esploso			
												00/4371			

DISTINTA BASE COMPONENTI Component part list - Liste des pieces Stueckliste - Lista de despieces			00/4371	FOGLIO Sheet - Page Seite - Hoja	2/3
P.	CODICE Code -Codigo	DENOMINAZIONE Description Beschreibung - Denominacion	Q.	NOTE Note - Plan Bemerk - Notas	
042	41222600000	O-RING ø3,53 O-RING - JOINT TORIQUE O-RING - JUNTA TORICA	2	mt. 2, 28	
045	42339109999	ANELLO F-91 810 INA RING - BAGUE RING - ANILLO	10		
048	43211200000	SEEGER "I" ø140 UNI 7437 CIRCLIP - CIRCLIP SEEGERRING - ANILLO FIJACION	10		
049	43215500000	SEEGER "I" ø250 UNI 7437 CIRCLIP - CIRCLIP SEEGERRING - ANILLO FIJACION	1		
052	43838400000	SPINA ELASTICA ø10x20 UNI6873 SPRING PIN - GOUPILLE ELAST. SPANNSTIFT - PASADOR ELASTICO	1		
054	46110200000	VITE M10x20 8G UNI 5739 SCREW - VIS SCHRAUBE - TORNILLO	20		
097	34306914200	FLANGIA IN USCITA OUTPUT FLANGE - BRIDE EN SORTIE ABTRIEBSFLANSCH - BRIDA EN SALIDA	1		
098	34215514200	FLANGIA INTERMEDIA INTERMED. FLANGE - BRIDE INTERMED. ZWISCHENFLANSCH - BRIDA INTERMEDIA	1		
099	35421824200	COPERCHIO COVER - COUVERCLE DECKEL - TAPA	1		
100	37403136200	PIASTRINA PLATE - PLAQUETTE PLATTCHEN - PLACA	1		
106	42330900000	CUSCINETTO SL 18 2968 DIN 5412 BEARING - ROULEMENT LAGER - COJINETE	2		
109	41144700000	ANELLO T.R. B1 340x380x20 OIL SEAL - JOINT D'ETANCH. DICHTRING - RETEN	1		
111	41222600000	O-RING ø3,53 O-RING - JOINT TORIQUE O-RING - JUNTA TORICA	1	mt. 1, 52	
112	43848900100	SPINA ELASTICA ø16x50 SPRING PIN - GOUPILLE ELAST. SPANNSTIFT - PASADOR ELASTICO	3		
113	43855500000	SPINA ELASTICA ø20x70 UNI6873 SPRING PIN - GOUPILLE ELAST. SPANNSTIFT - PASADOR ELASTICO	6		
115	36505840000	PRIGIONIERO M 30 STUD - GOUJON STIFTSCHRAUBE - PRISIONERO	30		
116	46213700000	VITE M12x30 8G UNI 5931 SCREW - VIS SCHRAUBE - TORNILLO	12		

DISTINTA BASE COMPONENTI Component part list - Liste des pieces Stueckliste - Lista de despieces			00/4371	FOGLIO Sheet - Page Seite - Hoja	3/3
P.	CODICE Code -Codigo	DENOMINAZIONE Description Beschreibung - Denominacion	Q.	NOTE Note - Plan Bemerk - Notas	
120	46702000001	ROSETTA 31x56x4 R80 UNI 6592 WASHER - RONDELLE SCHEIBE - ARANDELA	60		
122	46601700200	DADO M 30 8G UNI 5589 NUT - ECROU MUTTER - TUERCA	30		
123	46601700100	DADO M 30 8G UNI 5588 NUT - ECROU MUTTER - TUERCA	60		
125	45104300000	TAPPO ESAG. G1/4" PLUG - BOUCHON STOPFEN - TAPON	2	Acciaio	
126	45110800000	TAPPO "OIL LEVEL" G1" PLUG - BOUCHON STOPFEN - TAPON	3	Acciaio	
127	45108800000	TAPPO SFIATO G1" PLUG - BOUCHON STOPFEN - TAPON	1	Ottone	
128	45120800000	TAPPO MAGNETIC G1" PLUG - BOUCHON STOPFEN - TAPON	1	Ottone	
129	41700600100	RONDELLA DIN7603-A 33x39 - A1 WASHER - RONDELLE UNTERLEGSSCHEIBE - ARANDELA	5		
130	41700200100	RONDELLA D. 13,3/19x1,5 WASHER - RONDELLE UNTERLEGSSCHEIBE - ARANDELA	2	Alluminio	
131	45100200000	TAPPO 1/8"GAS DIN 906 PLUG - BOUCHON STOPFEN - TAPON	1		



Mod. A Inserita pos.41 e aggiornato cartiglio.

Mod. Data	Modificato da	Controllato da
07.08.03	S.Campari	V.Montanari

SE024384

STUECKLIST

DB02/4384/A

07-08-2003

Beschreibung: GETRIEBESTUFE
 Business Code: PDL141S/FE/..FGC44
 Absondern: (intermedia)

P.	Codieren	Bezeichnung	Q.at	Bemerk
001	32008422500	HOHLRAD	1	
003	32740322300	RITZEL i=3,57	1	
004	32740420300	RITZEL i=3,91	1	
005	32740522300	RITZEL i=4,35	1	
006	32740622300	RITZEL i=4,94	1	
007	32740722300	RITZEL i=5,79	1	
008	32740820300	RITZEL i=7,09	1	
010	32520932300	PLANETENRAD i=3,57	3	
011	32521030300	PLANETENRAD i=3,91	3	
012	32521132300	PLANETENRAD i=4,35	3	
013	32521232300	PLANETENRAD i=4,94	3	
014	32521332300	PLANETENRAD i=5,79	3	
015	32521430300	PLANETENRAD i=7,09	3	
017	34555203500	PLANETENTRAEGER i=3,57	1	
018	34555303500	PLANETENTRAEGER i=3,91	1	
019	34555403500	PLANETENTRAEGER i=4,35	1	
020	34555503500	PLANETENTRAEGER i=4,94	1	
021	34555603500	PLANETENTRAEGER i=5,79	1	
022	34555703500	PLANETENTRAEGER i=7,09	1	
024	31504630100	LAGERBOLZEN	3	no x i=3,57
025	31504030100	LAGERBOLZEN	3	x i=3,57
026	31728120300	WELLE	1	x i=3,57; 3,9
027	37307336200	ENDSCHEIBE	1	
028	36107640100	DRUCKPLATTE	1	
030	36345046300	DISTANZRING	6	x i=3,57
031	36351846300	DISTANZRING	1	x i=5,79-7,09
032	36700840100	KLEMMRING	2	x i=7,09
035	42338609999	SCHEIBE F-88 831	6	INA no x i=3,57
036	42338409999	SCHEIBE F-88 659	6	INA x i=3,57
037	42127100000	LAGER 16021 DIN625	1	
038	423386001X1	LAGER RSL18 5014*2S (2pz)	3	no x i=3,57

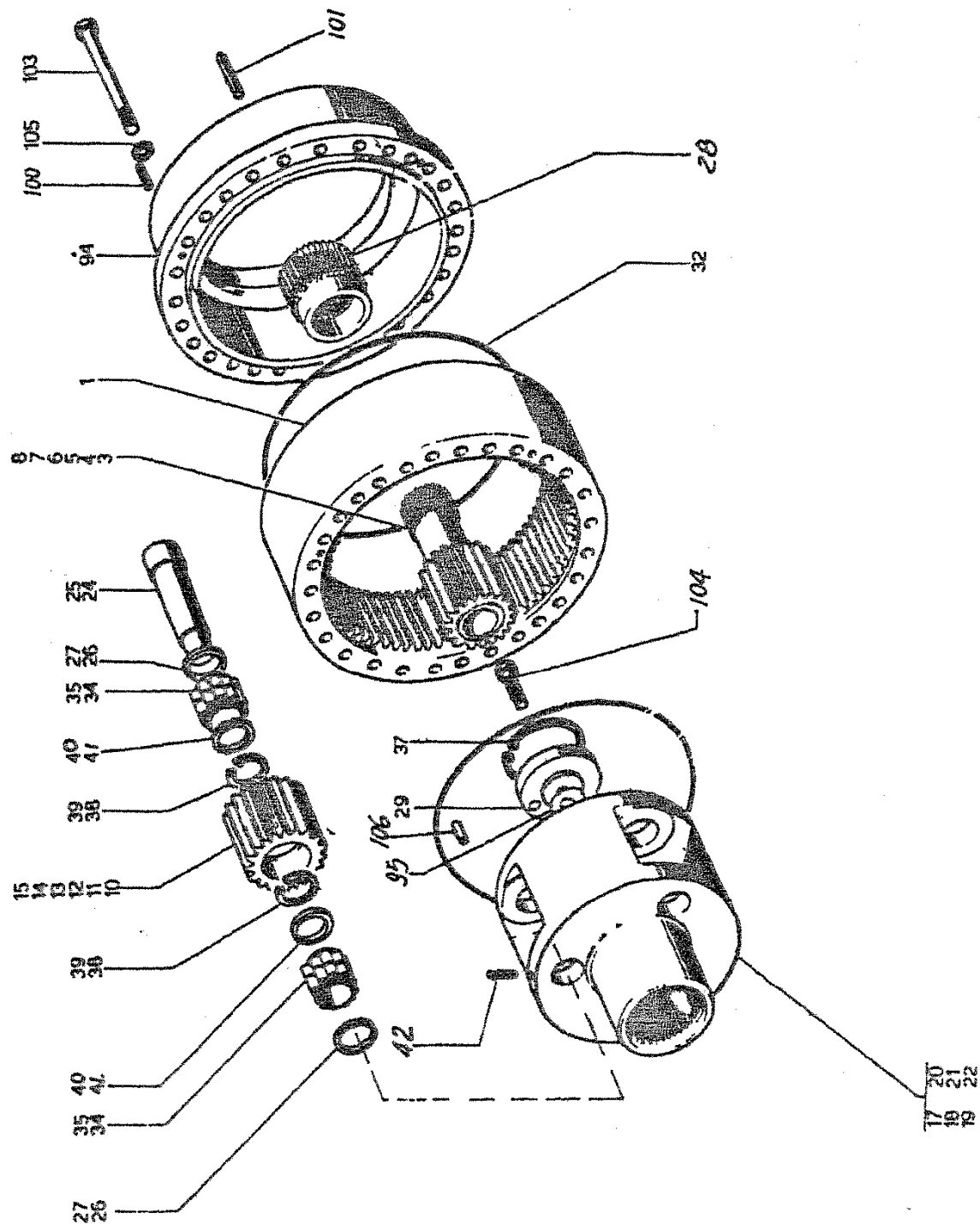
DB02/4384/A

1/2

P.	Codieren	Bezeichnung	Q.at	Bemerk
039	423384001X1	LAGER RSL18 5012*2S (2pz)	3	
041	41235600000	O-RING 2-260 164,49x3,53	1	x i=3,57
042	41222600000	O-RING 2600x3,53	2	metratura mt.1,24
044	43184300000	UNTERLEGSCHEIBE SS70x90x3,5 DIN988	6	no x i=3,57
045	43208800000	SEEGERRING Int.100 UNI7437-75	6	
046	43208000000	SEEGERRING Int.87 UNI7437-75	6	no x i=3,57
049	43213300000	SEEGERRING Int.175 UNI7437-75	1	x i=3,57
050	43319600000	SCHEIBE Int. SB 160	2	
052	43831400000	STIFT 6x16 UNI6873-71	1	
054	46409700100	SCHRAUBE M12x25 UNI5925-67-12.9	3	
098	34215614200	ZWISCHENFLANSCH	1	
099	36347546300	DISTANZRING	1	
106	42135000000	LAGER 61940 DIN625	1	
112	43849740100	STIFT Spirol 16x90	3	
113	43848900100	STIFT Spirol 16x50	3	
115	47352700000	STIFTSCHRAUBE M20x200 UNI5911-93 x=6,3max - 8.8	30	
120	46701600001	SCHEIBE 21x37x3 UNI6592-93-HV300	30	
123	46601300100	MUTTER M20 UNI5588-65-10	30	
126	45104700000	STOPFEN Brevini G3/4"	3	Acciaio
128	45120700000	STOPFEN Magnetic G3/4"	1	Ottone

Disegnato	AV	Controllato	AV	Espresso	AV	Mod.	I	Idia	AV
Controllato	AV	AV	AV	AV	AV	AV	AV	AV	AV
Data	14/01/91								

DESCRIZIONE	RIDUZIONE INTERMEDIA	ESPLOSO
TPO	PD10-PD14	08-4382
VERSIONE	PER EM 1150	DISTINTA



① Seccionado
② Plano dimensional
③ Estudio de factibilidad
④ Lista de repuestos

① Schnittzeichnung
② Dimensionszeichnung
③ Realisierbarkeitstudie
④ E.T.-Mappe

① Plan en coupe
② Plan encembrement
③ Etude de faisabilité
④ Liste de rechanges

① Cro-sectional drawing
② Dimensional drawing
③ Feasibility plan
④ Parts list

				08/4382		FOGLIO Sheet - Page Seite - Hoja		1/3
14.12.93				Controllata		INCERTI		14.12.93
DESCRIZIONE : RIDUZIONE EPICICLOIDALE PLANETARY STAGE PLANETENGETRIEBESTUFE								
REDUCTION PLANETAIRE REDUCCION EPICICLOIDAL								
TIPO..... : PD 10 - PD 14								
VERSIONE... : PER EM 1150 FOR EM 1150 FÜR EM 1150								
POUR EM 1150 PARA EM 1150								
P.	CODICE Code -Codigo	DENOMINAZIONE Description - Description Beschreibung - Denominacion	Q.	NOTE Note - Plan Bemerk - Notas				
001	32008222500	CORONA DENTATURA INTERNA RING-GEAR - COURONNE HOHLRAD - CORONA	1					
003	32738932300	GIUNTO CENTRALE i=3,57 SUN PINION - PIGNON CENTRAL ZENTRALRITZEL - PIÑON SOLAR	1					
004	32739032300	GIUNTO CENTRALE i=3,91 SUN PINION - PIGNON CENTRAL ZENTRALRITZEL - PIÑON SOLAR	1					
005	32739132300	GIUNTO CENTRALE i=4,35 SUN PINION - PIGNON CENTRAL ZENTRALRITZEL - PIÑON SOLAR	1					
006	32739232300	GIUNTO CENTRALE i=4,94 SUN PINION - PIGNON CENTRAL ZENTRALRITZEL - PIÑON SOLAR	1					
007	32739332300	GIUNTO CENTRALE i=5,79 SUN PINION - PIGNON CENTRAL ZENTRALRITZEL - PIÑON SOLAR	1					
008	32739432300	GIUNTO CENTRALE i=7,09 SUN PINION - PIGNON CENTRAL ZENTRALRITZEL - PIÑON SOLAR	1					
010	32540132300	SATELLITE i=3,57 PLANET GEAR - SATELLITE PLANETENRAD - SATELLITE	3					
011	32540232300	SATELLITE i=3,91 PLANET GEAR - SATELLITE PLANETENRAD - SATELLITE	3					
012	32519732300	SATELLITE i=4,35 PLANET GEAR - SATELLITE PLANETENRAD - SATELLITE	3					
013	32519832300	SATELLITE i=4,94 PLANET GEAR - SATELLITE PLANETENRAD - SATELLITE	3					
Mod. Descrizione modifica Data Es/Ct Sostituisce la:								
3	TOLTO NOTE "MONT.V3-V3A" SU POS.30-45-47-95-106 (PM114/7)		25.11.97	AN/CW	P.N.			
Comlessivo ①		Dimensionale ②		Studio fattibilità ③		Esplosio ④		
						08/4382		

P.	CODICE Code - Codigo	DENOMINAZIONE Description - Description Beschreibung - Denominación	Q.	NOTE Note - Plan Bemerk - Notas
014	32519932300	SATELLITE i=5,79 PLANET GEAR - SATELLITE PLANETENRAD - SATELITE	3	
015	32520032300	SATELLITE i=7,09 PLANET GEAR - SATELLITE PLANETENRAD - SATELITE	3	
017	345D1610000	PORTASATELLITE i=3,57 PLANET CARRIER - PORTE-SATELLITE PLANETENTRAEGER - PORTASATELITES	1	
018	345D1710000	PORTASATELLITE i=3,91 PLANET CARRIER - PORTE-SATELLITE PLANETENTRAEGER - PORTASATELITES	1	
019	345D1810000	PORTASATELLITE i=4,35 PLANET CARRIER - PORTE-SATELLITE PLANETENTRAEGER - PORTASATELITES	1	
020	345D1910000	PORTASATELLITE i=4,94 PLANET CARRIER - PORTE-SATELLITE PLANETENTRAEGER - PORTASATELITES	1	
021	345D2010000	PORTASATELLITE i=5,79 PLANET CARRIER - PORTE-SATELLITE PLANETENTRAEGER - PORTASATELITES	1	
022	345D2110000	PORTASATELLITE i=7,09 PLANET CARRIER - PORTE-SATELLITE PLANETENTRAEGER - PORTASATELITES	1	
024	31503830100	PERNO PORTASATELLITE PLANET SHAFT - AXE PORTESAT. LAGERBOLZEN - PERNO PORTASAT.	3	i=3,57-3,91
025	31505630100	PERNO PORTASATELLITE PLANET SHAFT - AXE PORTESAT. LAGERBOLZEN - PERNO PORTASAT.	3	NOi=3,57-3,9
026	36344646300	DISTANZIALE SPACER - ENTRETOISE DISTANZRING - DISTANCIADOR	6	i=3,57-3,91
027	36344546300	DISTANZIALE SPACER - ENTRETOISE DISTANZRING - DISTANCIADOR	6	NOi=3,57-3,9
028	39124330100	GIUNTO COUPLING - PIGNON KUPPLUNG - ACOPLAMIENTO	1	I=5,79-7,09
029	37307840100	FONDELLO END PLATE - RONDELLE D'ARBRE ENDSCHEIBE - ARANDELA TOPE	1	
030	36201340000	SPESSORE SHIM - EPAISSEUR ZWISCHENSCHIEBE - SEPARADOR	1	
032	41238800000	O-RING 2-280 O-RING - JOINT TORIQUE O-RING - JUNTA TORICA	2	
034	42335400100	CUSCINETTO RSL 18 3008 CL.25 BEARING - ROULEMENT LAGER - COJINETE	12	i=3,57-3,91
035	42338200100	CUSCINETTO RSL18 5010 BEARING - ROULEMENT LAGER - COJINETE	6	NOi=3,57-3,9

P.	CODICE Code -Codigo	DENOMINAZIONE Description - Description Beschreibung - Denominacion	Q.	NOTE Note - Plan Bemerk - Notas
037	43208900000	SEEGER "I" $\phi 102$ UNI 7437 CIRCLIP - CIRCLIP SEEGERRING - ANILLO FIJACION	1	
038	43206400200	SEEGER "I" $62 \times 2V$ UNI 7437 CIRCLIP - CIRCLIP SEEGERRING - ANILLO FIJACION	6	i=3,57-3,91
039	43207100200	SEEGER "I" $J72 \times 2,5V$ UNI 7437 CIRCLIP - CIRCLIP SEEGERRING - ANILLO FIJACION	6	NOi=3,57-3,9
040	42338009999	ANELLO $F-87$ 723 (INA) RING - BAGUE RING - ANILLO	6	i=3,57-3,91
041	42338209999	ANELLO F 87 608 RING - BAGUE RING - ANILLO	6	NOi=3,57-3,9
042	43835800100	SPINA ELASTICA 8×40 UNI 6875 SPRING PIN - GOUPILLE ELAST. SPANNSTIFT - PASADOR ELASTICO	3	
045	46120800000	VITE $M16 \times 50$ 8G UNI 5739 SCREW - VIS SCHRAUBE - TORNILLO	1	
047	46701400101	ROSETTA $17 \times 27 \times 3$ R80 UNI 6592 WASHER - RONDELLE SCHEIBE - ARANDELA	1	
094	3422661420K	FLANGIA INTERMEDIA INTERMED.FLANGE - BRIDE INTERMED. ZWISCHENFLANSCH - BRIDA INTERMEDIA	1	
095	36201340000	SPESSORE SHIM - EPAISSEUR ZWISCHENSCHLEIBE - SEPARADOR	1	
100	43842640100	SPINA SPIROL $\phi 12 \times 40$ SPRING PIN - GOUPILLE ELAST. SPANNSTIFT - PASADOR ELASTICO	1	
101	43843440100	SPINA SPIROL $\phi 12 \times 80$ SPRING PIN - GOUPILLE ELAST. SPANNSTIFT - PASADOR ELASTICO	3	
103	46122200100	VITE $M16 \times 160$ 10K UNI 5737 SCREW - VIS SCHRAUBE - TORNILLO	24	
105	46701400101	ROSETTA $17 \times 27 \times 3$ R80 UNI 6592 WASHER - RONDELLE SCHEIBE - ARANDELA	24	
106	43831400000	SPINA ELASTICA $\phi 6 \times 16$ UNI 6873 SPRING PIN - GOUPILLE ELAST. SPANNSTIFT - PASADOR ELASTICO	1	